

Dear, Sir

Thanks for your interested our product.

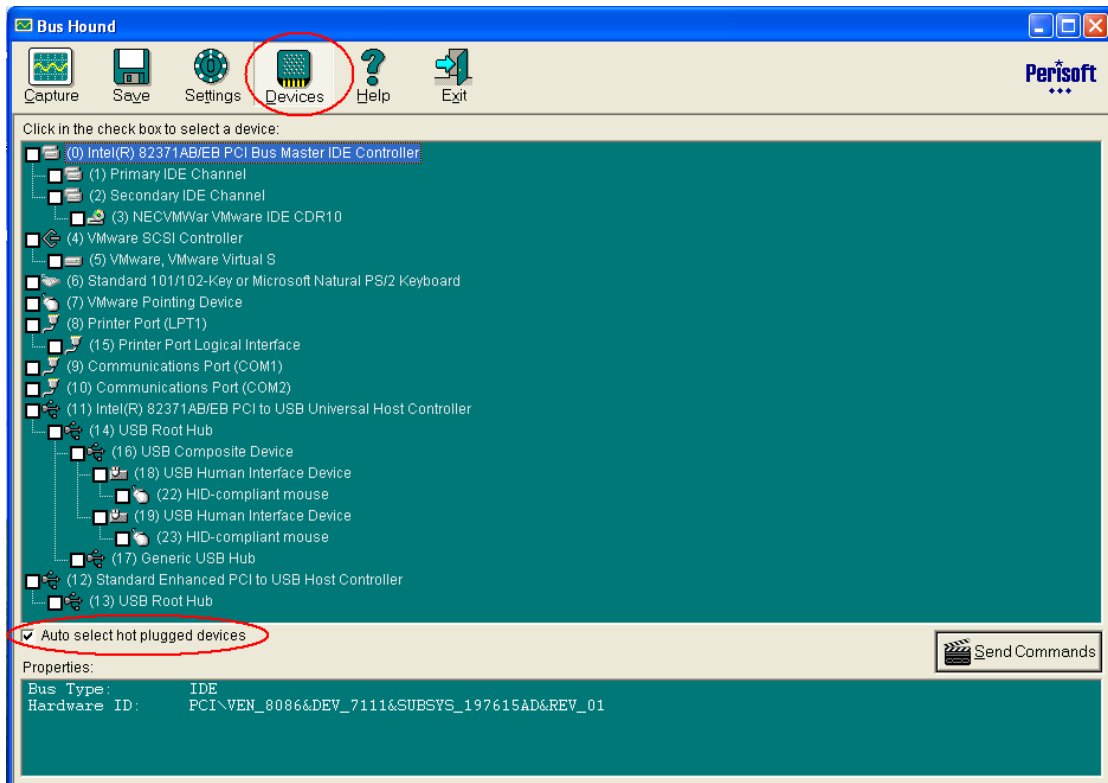
As your problem, we need to get more information to help our R&D people to analyses.

Please follow below operation to get transfer log and send back to us.

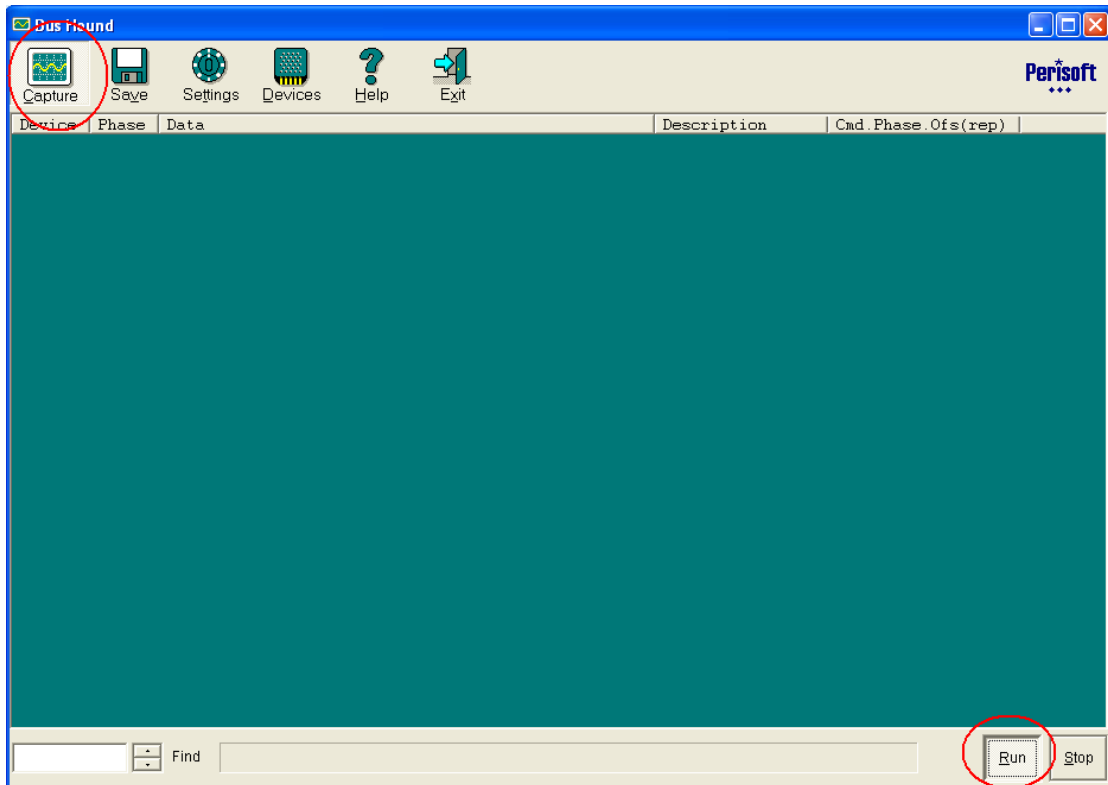
We will try our best to help you ASAP.

1. Download and install bushound to monitor data transfer
<http://download.ftsafe.com/files/reader/BusHound+v6.0.1.zip>

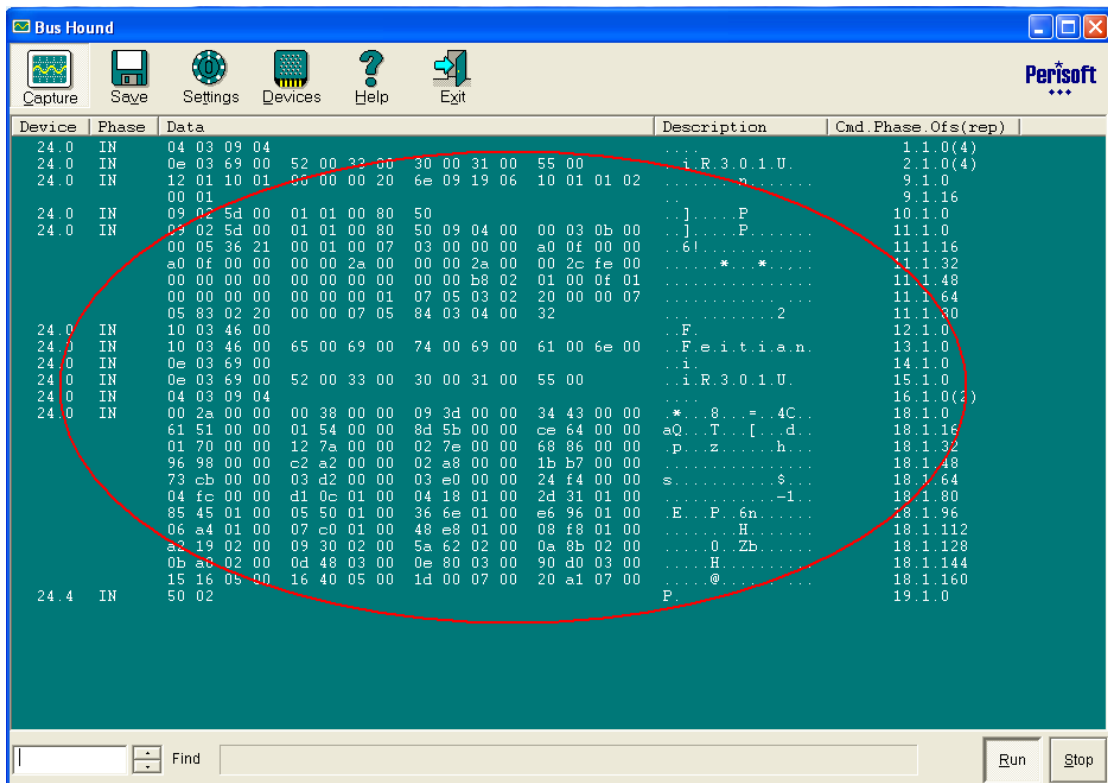
2. Config bushound:



3. Switch session to Capture and click Run button to monitor:



4. Plug in smart card reader, it will display some information like below:



5. Then insert card and save to log, send back all transfer log to us.

Bus Hound [Icons: Capture, Save, Settings, Devices, Help, Exit] Perisoft

Device	Phase	Data	Description	Cmd.Phase.Ofs(rep)
24.0	IN	04 03 09 04	...	1.1.0(4)
24.0	IN	0e 03 69 00	..i.R.3.0.1.U.	2.1.0(4)
24.0	IN	12 01 10 01n.....	9.1.0
24.0	IN	00 01	..	9.1.16
24.0	IN	09 02 5d 00	..]....P.....	10.1.0
24.0	IN	09 02 5d 00	..]....P.....	11.1.0
24.0	IN	00 05 36 21	..6!.....	11.1.16
24.0	IN	a0 0f 00 00*.*.....	11.1.32
24.0	IN	00 00 00 00b8 02 01 00 0f 01	11.1.48
24.0	IN	00 00 00 0007 05 03 02 20 00 00 07	11.1.64
24.0	IN	05 83 02 202.....	11.1.80
24.0	IN	10 03 46 00	..F.....	12.1.0
24.0	IN	10 03 46 00	..F.e.i.t.i.a.n.	13.1.0
24.0	IN	0e 03 69 00	..i.....	14.1.0
24.0	IN	0e 03 69 00	..i.R.3.0.1.U.	15.1.0
24.0	IN	04 03 09 04	...	16.1.0(2)
24.0	IN	00 2a 00 00	..*...8...=...4C...	18.1.0
24.0	IN	61 51 00 00	aQ...T...[...d...	18.1.16
24.0	IN	01 70 00 00	..p...z...h...	18.1.32
24.0	IN	96 98 00 00c2 a2 00 00 02 a8 00 00 1b b7 00 00	18.1.48
24.0	IN	73 cb 00 0003 d2 00 00 03 e0 00 00 24 f4 00 00	18.1.64
24.0	IN	04 fc 00 00d1 0c 01 00 04 18 01 00 2d 31 01 00	18.1.80
24.0	IN	85 45 01 0005 50 01 00 36 6e 01 00 e6 96 01 00	18.1.96
24.0	IN	06 a4 01 0007 e0 01 00 48 e8 01 00 08 f8 01 00	18.1.112
24.0	IN	a2 19 02 0009 30 02 00 5a 62 02 00 0a 8b 02 00	18.1.128
24.0	IN	0b a0 02 000d 48 03 00 0e 80 03 00 90 d0 03 00	18.1.144
24.0	IN	15 16 05 001d 00 07 00 20 a1 07 00	18.1.160
24.4	IN	50 02	P.....	19.1.0
24.4	IN	50 03	P.....	20.1.0
24.3	OUT	62 88 00 00	C.....	21.1.0
24.3	IN	81 00 00 0000 00 01 01 00 00	22.1.0
24.3	OUT	62 00 00 0000 00 02 00 00 00	23.1.0
24.3	IN	80 12 00 0000 00 02 00 00 00 3b 9a 95 81 31 80	24.1.0
24.3	IN	9f 48 31 30	..H10CR.FT00.	24.1.16

Find [] Run Stop